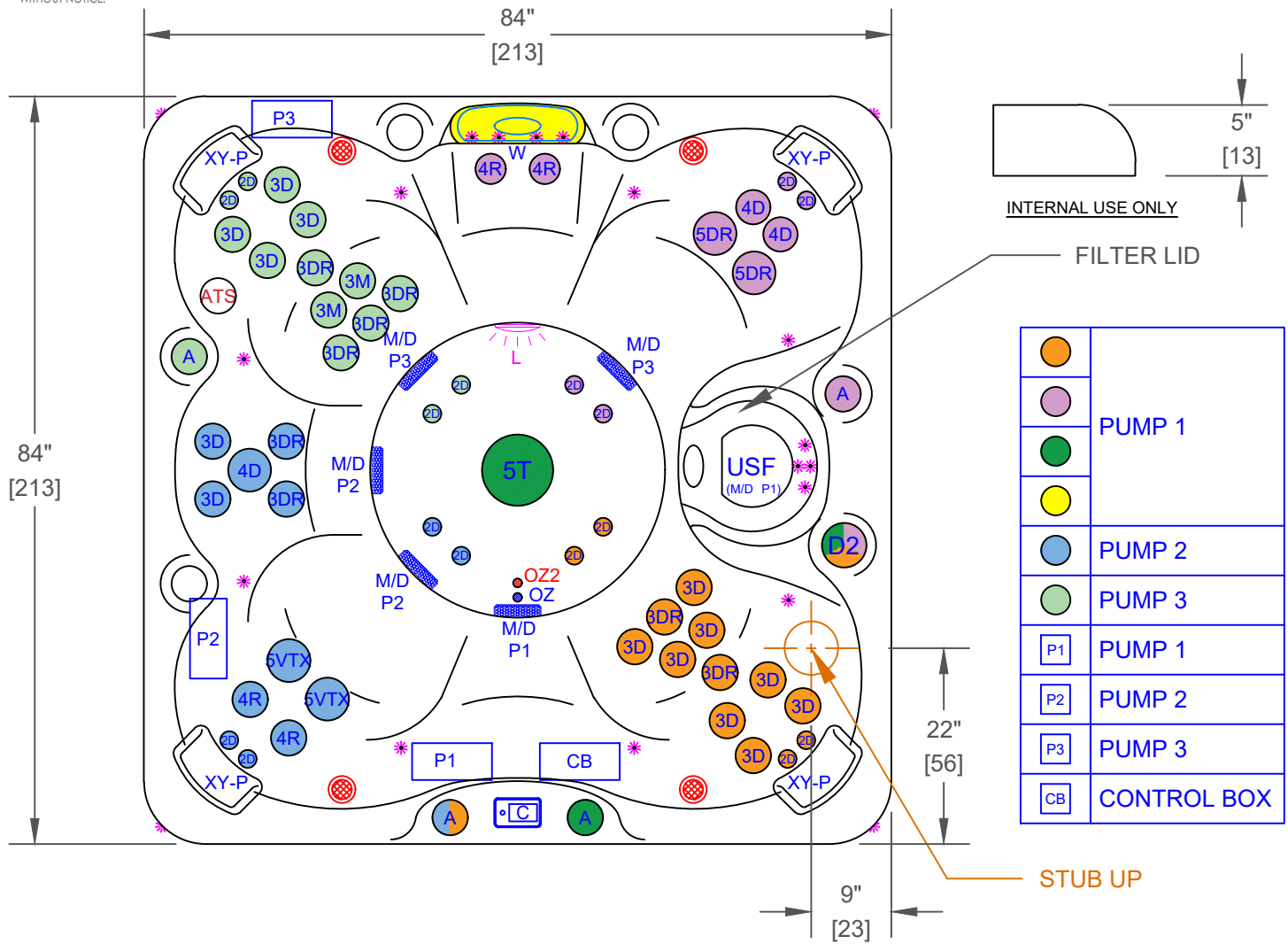


NOTES:
 1. DUE TO OUR CONTINUOUS IMPROVEMENT PROGRAM, ALL MODELS AND SPECIFICATIONS ARE SUBJECT TO CHANGE WITHOUT NOTICE.



| | |
|--|-------------|
| | PUMP 1 |
| | PUMP 1 |
| | PUMP 3 |
| | PUMP 2 |
| | PUMP 2 |
| | PUMP 3 |
| | PUMP 1 |
| | PUMP 2 |
| | PUMP 3 |
| | CONTROL BOX |

| EC-751BX - LEGEND | | | |
|-------------------|---|--------------------|------|
| SYMB. | DESCRIPTION | PART NUMBER | QTY. |
| 2D | 2" CLUSTER STORM DIRECTIONAL VECTOR X | PLUCS2440019S-HLG | 16 |
| 3D | 3" MINI STORM DIRECTIONAL VECTOR X | PLUCS2445009SS-HLG | 14 |
| 3M | 3" MINI STORM MASSAGE DIRECTIONAL VECTOR X | PLUCS2445059S-HLG | 2 |
| 3DR | 3" MINI STORM TWISTER VECTOR X | PLUCS2441049S-HLG | 8 |
| 4D | 4.5" POLY STORM DIRECTIONAL VECTOR X | PLUCS2446009SS-HLG | 3 |
| 4R | 4.5" POLY STORM ROTO VECTOR X | PLUCS2446039S-HLG | 4 |
| 5VTX | 5" POWER STORM TRI DIRECTIONAL VECTOR X | PLUCS2447019S-HLG | 2 |
| 5DR | 5" POWER STORM TWISTER VECTOR X | PLUCS2447049SS-HLG | 2 |
| 5T | 5" ADJUSTABLE WHIRLPOOL VECTOR X WITH VALVE | PLUCS2394029S-HLG | 1 |
| D2 | ORION 2" WATER DIVERTER VALVE | PLUCS600-7609-CDHL | 1 |
| A | ORION AIR CONTROL VALVE | PLUCS660-7609-CDHL | 4 |
| W | LED WATERFALL | | 1 |
| USF | 75 SQ. FT. ULTRA SKIM FILTER | 517-4619LC-HLG | 1 |
| M/D | 5" MAIN DRAIN 2.5"S | PLU644-5419-HLG V | 5 |
| XY-P | TEXTURED Y-PILLOW (WHITE) | | 4 |
| C | TOUCH CONTROL+ 1001 | | 1 |
| OZ | PURE SILK OZONATOR WITH MAZZIE INJECTOR AND MIXING CHAMBER | | 1 |
| P1, P2, P3 | HIGH PERFORMANCE PUMP 6.0 BHP | | 3 |
| CB | CONTROL BOX WHISPER HOT™ HEATING SYSTEM | | 1 |
| | ELITE III SPOTLIGHT 4x CABINET CORNERS LED LIGHTING & STAINLESS STEEL ACCENTS | | 1 |
| | 5" MULTI COLORED LED LIGHT | | 1 |
| | PERIMETER LED LIGHTING | | 1 |
| - | EXTERIOR LED CAL SPAS LOGO | | 1 |
| - | FILTER LID (SINGLE FLT) | FIL11300260 | 1 |

| OPTIONS | | |
|---------|--|----------------------------------|
| SYMB. | DESCRIPTION | OPTION NUMBER |
| - | CAL SPAS THROTTLE SEAT WITH VARIABLE SPEED PUMP | OPT25-108FLX N/A WITH OPT25-113S |
| ATS | EXCLUSIVE ADJUSTABLE THERAPY SYSTEM WITH FLOOR JETS | OPT25-109 N/A WITH OPT25-112C |
| | TWIN PURE SILK SYSTEM DIAL OZONATORS WITH MAZZIE INJECTORS AND MIXING CHAMBERS | OPT25-102DX-1 |
| - | BALBOA EQUIPMENT WITH XL HEATER BP501X w/TOUCH 2 TOPSIDE | OPT25-139BP-3 |
| | CAL SPAS SALT SYSTEM | OPT25-113S N/A WITH OPT25108FLX |
| - | PURE CURE UV PURIFICATION SYSTEM | OPT25-191B |
| | 24/7 FILTRATION SYSTEM | OPT25-112C N/A WITH OPT25-109 |
| - | CAL RIDGE CABINET w/SMOOTH CORNERS & LED PERIMETER CABINET LIGHTING | OPT25-983CR-7 |
| - | ABS MOLDED BOTTOM TRAY | OPT25-990-7 |
| - | CAL CONNECT RF MODULE | OPT25-168RF |
| | FREEDOM SOUND SYSTEM BLUETOOTH, POWERED SUBWOOFER AND 4X SPEAKERS | OPT25-FS43 |
| - | THERMO-GUARD FULL FOAM | OPT25-900 |

| | | | |
|--|--------------------|---|------------------------|
| PROPRIETARY AND CONFIDENTIAL THE INFORMATION CONTAINED IN THIS DRAWING IS THE SOLE PROPERTY OF CAL SPAS. ANY REPRODUCTION IN PART OR AS A WHOLE WITHOUT THE WRITTEN PERMISSION OF CAL SPAS IS PROHIBITED. | | CAL SPAS INC. 1462 EAST NINTH STREET, POMONA, CA 91766 | |
| SPECIFICATIONS | | TITLE | JET LAYOUT - STD |
| DIMENSION (in) | 84"x84"x40-1/2" | LINE | ESCAPE X-SERIES |
| DIMENSION (cm) | 213x213x100 | MODEL | 2025 SPA LINE TROPICAL |
| DRY WEIGHT | 800 LBS [363 Kg] | NUM | EC-751BX |
| FILLED WEIGHT | 4340 LBS [1969 Kg] | DWG NO. | CS003331 |
| | | REV | B |
| WATER CAP. | 425 GAL [1609 L] | SCALE | NTS |
| | | | SHEET 1 OF 1 |